



JW MARRIOTT

DESERT SPRINGS PALM DESERT  
RESORT & SPA

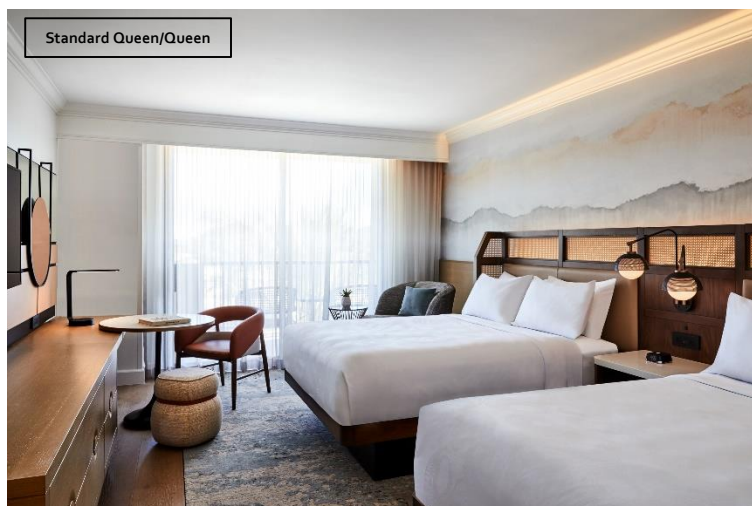
# Rooms & Suites \$311 a night



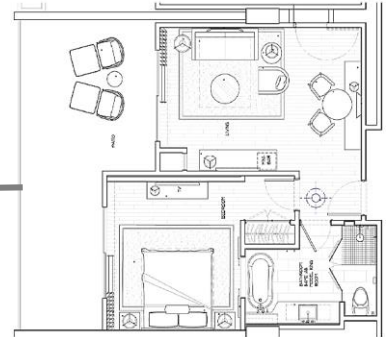
While the majestic scenery and spectacular desert landscape may beckon you outside, our elegantly appointed guestrooms with luxurious amenities may persuade you to stay put and enjoy the great indoors.

If you don't see what you need, just ask! We'll try to accommodate any request because we are always "At Your Service." The following is a partial list of in-room amenities.

- ✓ 400 Kings and 383 Queen/Queens / 101 Suites
- ✓ Marriott's Revive custom bedding
- ✓ Flat screen TVs
- ✓ Stream Netflix, Pandora, Crackle and YouTube
- ✓ High speed wireless internet
- ✓ Safes
- ✓ Coffee / Tea maker
- ✓ Mini refrigerator
- ✓ Balcony
- ✓ Multiple & convenient electrical outlets and USB ports
- ✓ Bedside alarm
- ✓ Accessible rooms available

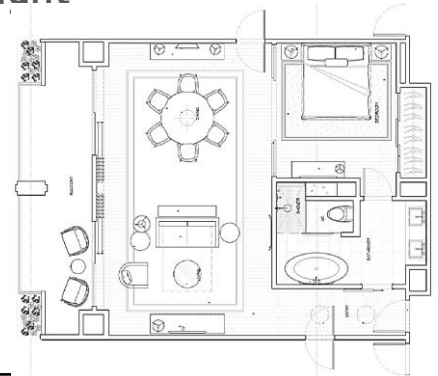


## Griffin Suite \$549 a night



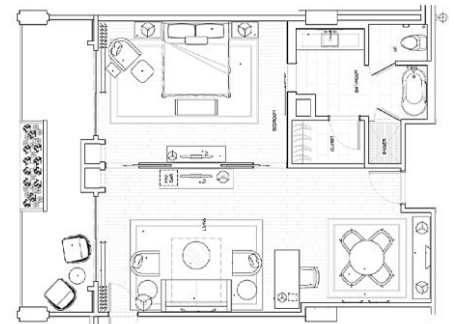
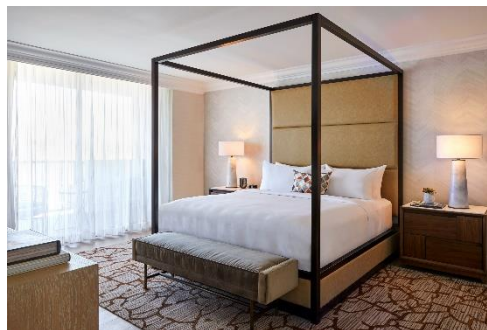
<b>Square Feet:</b>	540 + 200 sf over-sized balcony
<b>Special Features:</b>	4-poster bed*, separate tub & shower, various stunning views, 2 flat screen TVs
<b>Reception Capacity:</b>	Up to 10 people on flow basis
<b>Exceptions:</b>	*6 Griffin Suites designed with open flow from living area to bedroom

## Executive Suite \$649 a night



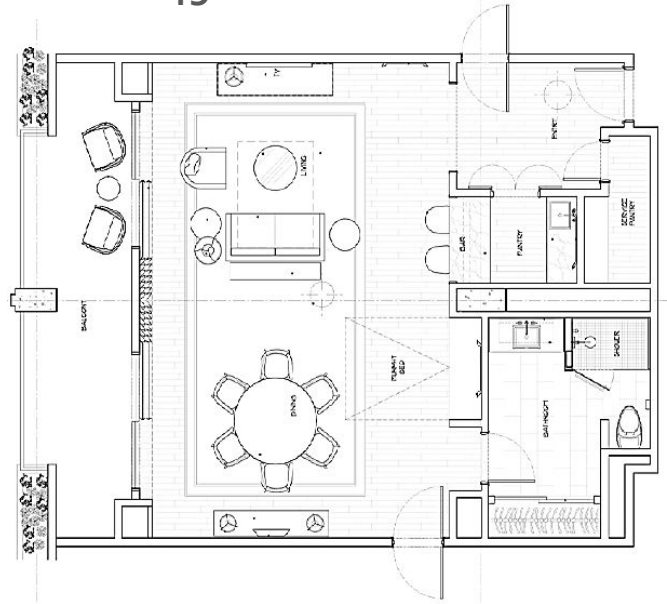
<b>Square Feet:</b>	588 + 140 sf balcony
<b>Special Features:</b>	Dining room table, wood sliders separating the bedroom, oversized closet, 2 flat screen TVs, oversized balcony
<b>Reception Capacity:</b>	Up to 12 people on a flow basis

## Signature Suite \$749 a night



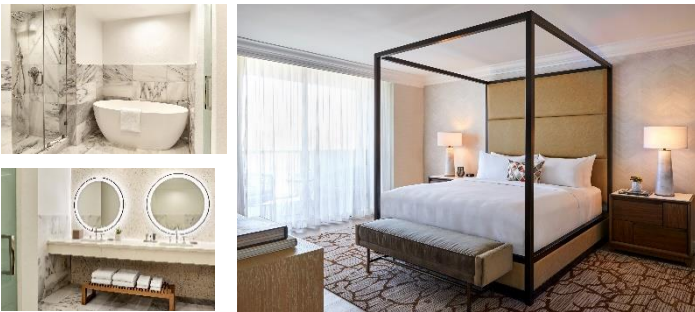
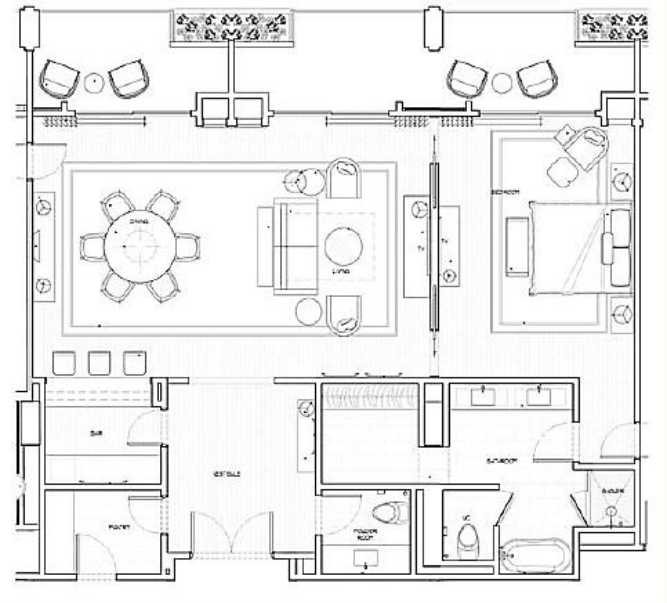
<b>Square Feet:</b>	790 + 140 sf balcony
<b>Special Features:</b>	Work desk, walk-in closet, 2 flat screen TVs, double balcony
<b>Reception Capacity:</b>	Up to 12 people on a flow basis

## Governor's Suite \$849



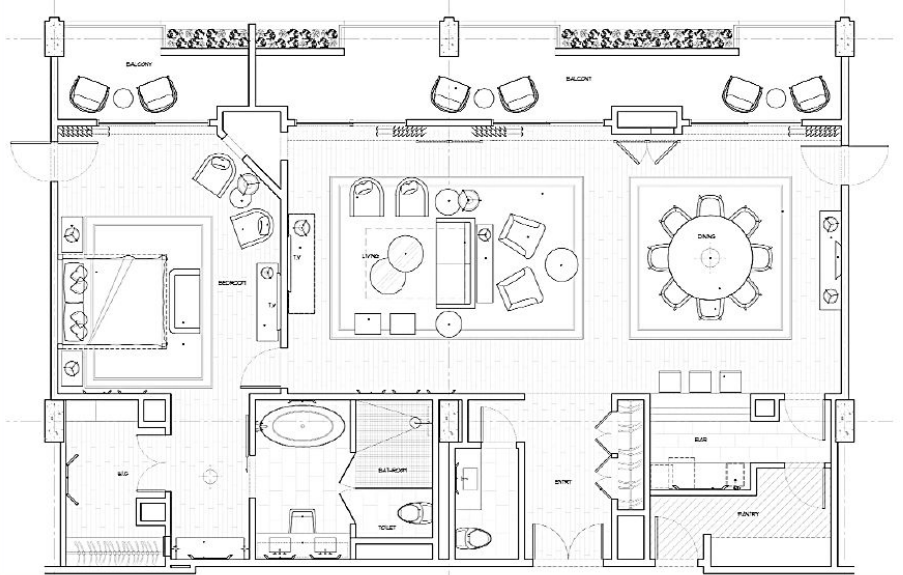
<b>Square Feet:</b>	504 + Connecting Room K or Q/Q
<b>Special Features:</b>	Wet bar and pantry, additional Murphy bed, 2 flat screen TVs, dining room table, double balcony, guest bathroom
<b>Bedroom:</b>	Connects to King or Queen/Queen sleeping room
<b>Reception Capacity:</b>	Up to 35 people on flow basis

## Vice Presidential Suite \$949 a night



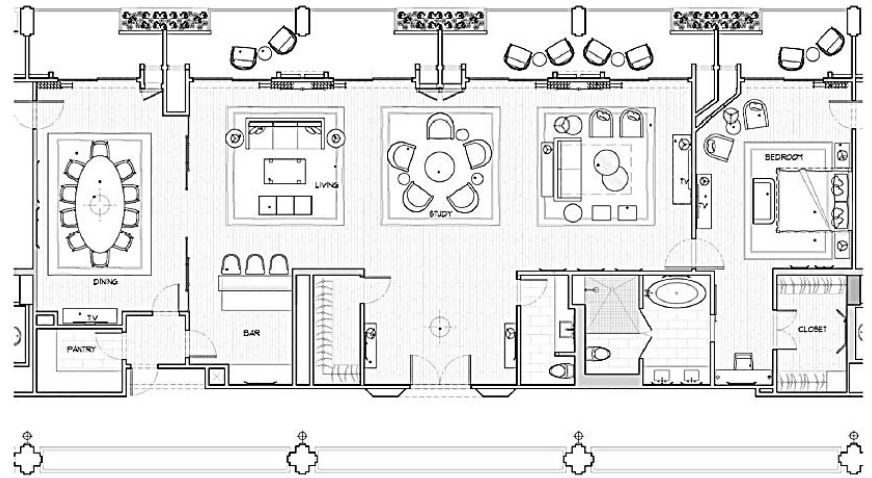
<b>Square Feet:</b>	714 + 140 sf Balcony
<b>Special Features:</b>	Wet bar/pantry, dining room table, 2 flat screen TVs, triple balcony, pocket doors to bedroom, guest bathroom
<b>Reception Capacity:</b>	Up to 45 people on flow basis

## Presidential Suite \$1,500 a night



<b>Square Feet:</b>	1,270 + 210 sf Balcony
<b>Special Features:</b>	Enhanced seating areas w/ higher tier furnishings, wet bar, pantry w/ full-size fridge and separate service entrance, guest bathroom, 3 flat screen TVs, large walk-in closet, oversized tub, multi-faucet shower, work area, dining room table, guest bathroom, bedroom has private balcony
<b>Add'l Bedroom Options:</b>	Can connect to additional Queen/Queen or King sleeping room(s)
<b>Reception Capacity:</b>	Up to 60 people on flow basis

## Chairman's Suite \$1,700 a night



<b>Square Feet:</b>	1,768 + 350 sf Balcony
<b>Special Features:</b>	Enhanced seating areas w/ higher tier furnishings, wet bar, pantry w/ full-size fridge and separate service entrance, guest bathroom, 3 flat screen TVs, large walk-in closet, oversized tub, multi-faucet shower, work area, formal dining room, guest bathroom, bedroom has private balcony
<b>Add'l Bedroom Options:</b>	Can connect to additional Queen/Queen or King sleeping room(s)
<b>Reception Capacity:</b>	Up to 85 people on flow basis